

ENGINEERED

CLIP AND FASTENER GUIDE

WELCOME!

Welcome to Sheffield Metals' guide for choosing the right clips and fasteners for our engineered systems. Figuring out which clips and fasteners to use for your metal roofing project can be confusing, but we're here to help make it simple.

In this guide, you'll find straightforward instructions to match your panel profile and project needs, ensuring you get the job done right.

HOW TO USE THE GUIDE

This guide outlines the correct clips and fasteners to use for specific Sheffield Metals engineered systems. To use it, find your engineered panel profile and identify the materials and decking you'll be using for your project. From there, you'll find information on the exact clips or fasteners to use.

These pertinent details include specifics such as:



CLIP TYPE AND GAUGE

The unique type of clip and the metal thickness required for that profile.



BOX QUANTITY

The number of clips included in each box shipment.



PART NUMBER

The corresponding code to help you find the exact product you need from Sheffield Metals.



STAINLESS STEEL REQUIREMENTS

Any specific types of projects that may require usage of stainless steel clips.

Selecting the right accessories is essential for the success and longevity of your roofing project, and we hope this guide helps you tackle it with confidence. Your roofing project's success is our priority, and we're here to support you every step of the way.

If you have any further questions or need assistance, visit our website at sheffieldmetals.com for more information about our engineered systems, panel profiles, clips, and fasteners.

SMI 1.0 MS



STEEL PANELS OVER PLYWOOD

90/SINGLE LOCK

Clip Gauge: 24

Box Quantity: 1000

Part Number: XCMF10024CNUSM

FBC: Non-HVHZ

SMI 1.5 SL 450



STEEL PANELS OVER PLYWOOD

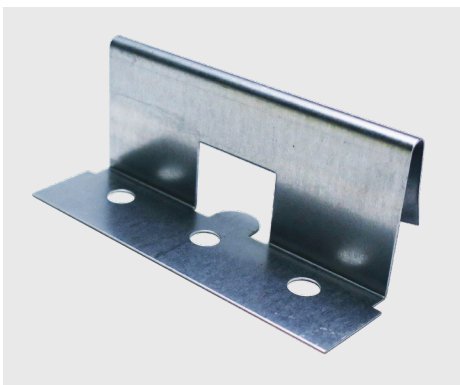
Clip Gauge: 24

Box Quantity: 800

Part Number: XCSL15024CNUSM-1

FBC: Non-HVHZ

SMI 1.5 SL 450+



STEEL PANELS OVER PLYWOOD

Clip Gauge: 24

Box Quantity: 600

Part Number: XCSL15024CNUSM

FBC: Non-HVHZ

SMI 1.5 SL 550



STEEL PANELS OVER PLYWOOD

Clip Gauge: 20

Box Quantity: 500

Part Number: XCSL15020CSESF

FBC: Non-HVHZ



ALUMINUM PANELS OVER PLYWOOD, METAL DECK WITH AND WITHOUT ISO

Clip Gauge: 20

Box Quantity: 300

Part Number: XCSL15020CAESM

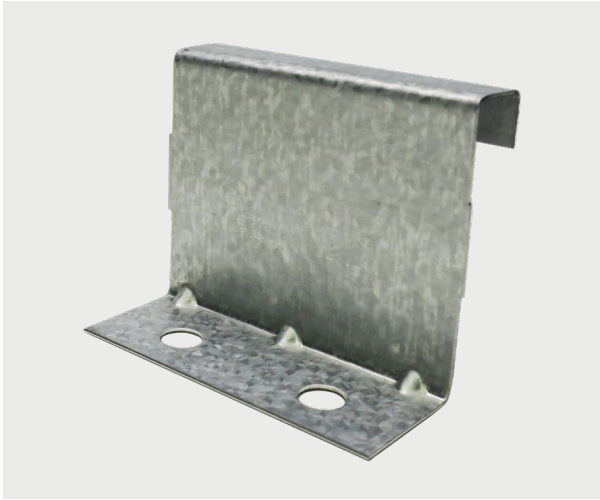
Stainless Steel Part Number: XCSL15020SAESM

FBC: Non-HVHZ

NOTE

Stainless steel is required for coastal projects within 1500 feet of saltwater.

SMI 1.5 MS



STEEL & ALUMINUM PANELS OVER 3-PLY PLYWOOD

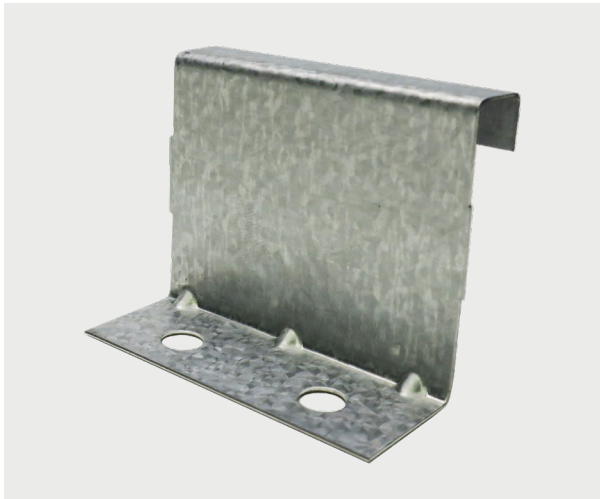
90/SINGLE LOCK

Clip Gauge: 24

Box Quantity: 1000

Part Number: XCMF15024CNUSM

FBC: Non-HVHZ



STEEL & ALUMINUM PANELS OVER PLYWOOD

90/SINGLE LOCK

Clip Gauge: 26

Box Quantity: 1000

Part Number: XCMF15026CNUSM (Steel Panels)

Stainless Steel Part Number: XCMF15026SNUSM
(Aluminum Panels)

FBC: HVHZ & Non-HVHZ

NOTE

XCMF15024CNUSM can be used on steel panels if XCMF15026CNUSM is not available.



STEEL PANELS OVER PLYWOOD, METAL DECK WITH & WITHOUT ISO

180/DOUBLE LOCK

Clip Gauge: 22 Base, 24 Tab

Box Quantity: 200

Base Part Number: XCMS15B22CSESF

Tab Part Number: XCMS15T24CSESF

FBC: HVHZ & Non-HVHZ



ALUMINUM PANELS OVER PLYWOOD

180/DOUBLE LOCK

Clip Gauge: 18 Base, 24 Tab

Box Quantity: 250

Part Number: XCMS15024CAESM

Stainless Steel Part Number: XCMS15024SAESM

FBC: HVHZ & Non-HVHZ



ALUMINUM PANELS OVER METAL DECK WITH & WITHOUT ISO

180/DOUBLE LOCK

Clip Gauge: 18 Base, 24 Tab

Box Quantity: 250

Part Number: XCMS15024CAESM-1

Stainless Steel Part Number: XCMS15024SAESM-1

FBC: Non-HVHZ

NOTE

Stainless steel is required for coastal projects within 1500 feet of saltwater.

SMI 1.75 SL



STEEL PANELS OVER PLYWOOD, METAL DECK WITH & WITHOUT ISO

Clip Gauge: 18

Box Quantity: 250

Part Number: XCSL17518CSESF

Stainless Steel Part Number: XCSL17518SSESF

FBC: HVHZ & Non-HVHZ

NOTE

This clip can also be used for aluminum systems.



ALUMINUM PANELS OVER PLYWOOD, METAL DECK WITH & WITHOUT ISO

Clip Gauge: 18

Box Quantity: 250

Part Number: XCSL17518SNUSM-1

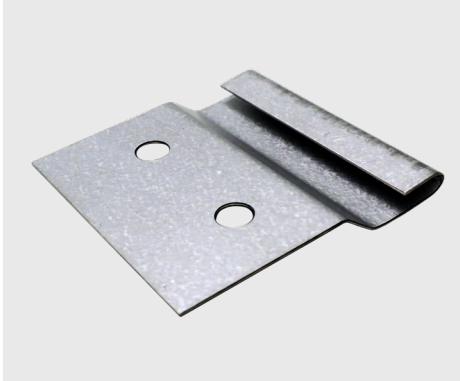
Stainless Steel Part Number: XCSL17518CAESM

FBC: HVHZ & Non-HVHZ Plywood, Non-HVHZ
Steel Decks

NOTE

Stainless steel is required for coastal projects within 1500 feet of saltwater.

SMI WAV PANEL



STEEL PANELS OVER OPEN FRAMING

Clip Gauge: 24

Box Quantity: 1500

Part Number: XCNTWAVCLIPSM

FBC: Non-HVHZ

SMI 2.0 MS



STEEL PANELS OVER PLYWOOD

90/SINGLE LOCK

Clip Gauge: 24

Box Quantity: 300

Part Number: XCMF20024CNUSM

FBC: Non-HVHZ



STEEL PANELS OVER PLYWOOD, METAL DECK WITH & WITHOUT ISO

180/DOUBLE LOCK

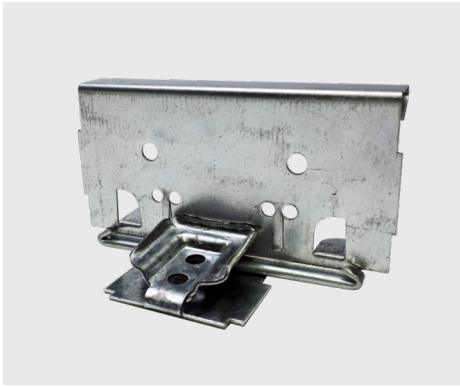
Clip Gauge: 18 Base, 22 Tab

Box Quantity: 150

Base Part Number: XCMS20B18CESF

Tab Part Number: XCMS20T22CSESF

FBC: HVHZ & Non-HVHZ



STEEL PANELS OVER OPEN FRAMING

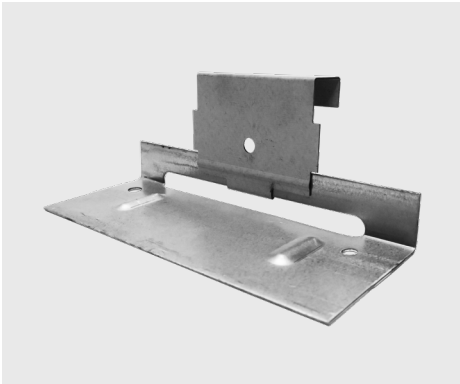
180/DOUBLE LOCK

Clip Gauge: 16 Base, 22 Tab

Box Quantity: 100

Part Number: XCMS20022CSESF

FBC: Non-HVHZ



ALUMINUM PANELS OVER PLYWOOD

180/DOUBLE LOCK

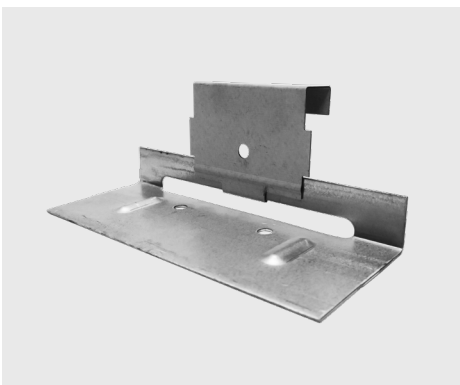
Clip Gauge: 18 Base, 22 Tab

Box Quantity: 200

Part Number: XCMS20022CAESM

Stainless Steel Part Number: XCMS20022SAESM

FBC: HVHZ & Non-HVHZ



ALUMINUM PANELS OVER METAL DECK WITH & WITHOUT ISO

180/DOUBLE LOCK

Clip Gauge: 18 Base, 22 Tab

Box Quantity: 200

Part Number: XCMS20022CAESM-1

Stainless Steel Part Number: XCMS20022SAESM-1

FBC: Non-HVHZ

NOTE

Stainless steel is required for coastal projects within 1500 feet of saltwater.

FASTENERS



PLYWOOD — ALL PANELS

#10-13 x 1" Pancake Head Screw

Bag Quantity: 250

Part Number: XF10PC100WSCMLTF

Stainless Steel Part Number: XF10PC100WSSMLTF

NOTE

Stainless steel is required for coastal projects within 1500 feet of saltwater.



METAL WITH & WITHOUT ISO — ROOF PANELS

#14-13 Pancake Head DP1

Bag Quantity: 250

Sizes: 1.5" – 9" (Length of fastener will be determined by ISO thickness. Fastener must penetrate substrate at least 1/2.")

Size	Part Number	Stainless Steel Part Number	Size	Part Number	Stainless Steel Part Number
1.5"	XF14PC150CD1MLTF	XF14PC150SD1MLTF	6"	XF14PC600CD1MLTF	XF14PC600SD1MLTF
2"	XF14PC200CD1MLTF	XF14PC200SD1MLTF	7"	XF14PC700CD1MLTF	XF14PC700SD1MLTF
3"	XF14PC300CD1MLTF	XF14PC300SD1MLTF	8"	XF14PC800CD1MLTF	XF14PC800SD1MLTF
4"	XF14PC400CD1MLTF	XF14PC400SD1MLTF	9"	XF14PC900CD1MLTF	XF14PC900SD1MLTF
5"	XF14PC500CD1MLTF	XF14PC500SD1MLTF			

NOTE

Stainless steel is required for coastal projects within 1500 feet of saltwater.



OPEN FRAMING — ROOF PANELS

#1/4-14 x 1.5 " HWH SD2

Bag Quantity: 250

Part Number: XF14HW150D2CSF



OPEN FRAMING — WALL FWP

#14-13 x 1.5" Pancake Head DP1

Bag Quantity: 250

Part Number: XF14PC150CD1MLFTF



OPEN FRAMING — WALL WAV 4F & 4C

#10-16 x 1" Pancake Head DP3

Bag Quantity: 250

Part Number: XF10PC100D3CMLFTF



For more information on the engineered systems, panel profiles, clips, or fasteners offered by Sheffield Metals, visit sheffieldmetals.com.